

CLINIC WAY

Dr Irena Eris

Dr Irena Eris

CLINIC WAY



CLINIC WAY - CLINICALLY PROVEN SAFETY & EFFICACY

CLINIC WAY

Dr Irena Eris

Dr Irena Eris

CLINIC WAY

Pharmaceris



CLINIC WAY - CLINICALLY PROVEN SAFETY & EFFICACY

Dr Irena Eris

CLINIC WAY

Clinic Way is a special unique line dedicated to the
dermatologists and pharmacists as a result
of advanced research conducted by Polish
and Norwegian scientists

A WORLD INNOVATION

A GROUNDBREAKING INVENTION OF
POLISH AND NORWEGIAN SCIENTISTS

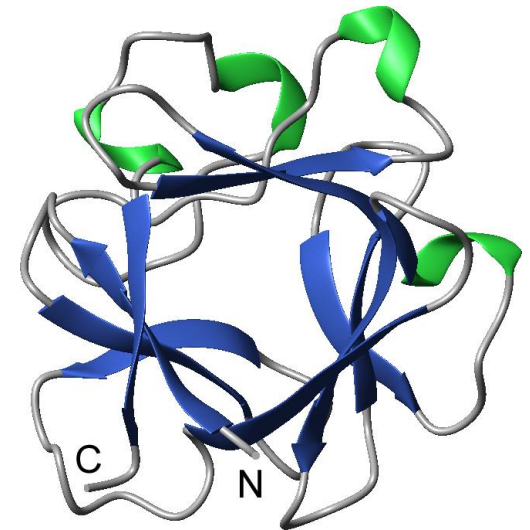
FGF1 LMS™ FORMULA
SKIN RENEWAL REACTIVATOR

LIPO-SPHERE TECHNOLOGY
A UNIQUE TRANSDERMAL DELIVERY TECHNOLOGY



The fibroblast growth factor – FGF1

- a globular protein composed of 12 β -strands folded into a β -trefoil unit
- synthesized in many types of tissues including smooth muscle cells, epithelial cells, hepatocytes, fibroblasts, macrophages, and neurons
- a strong mitogen
- stimulates DNA synthesis and the proliferation of many cell types
- promotes the migration and chemotaxis of endothelial cells and fibroblasts
- an important factor which contributes to regeneration, wound healing, and angiogenesis

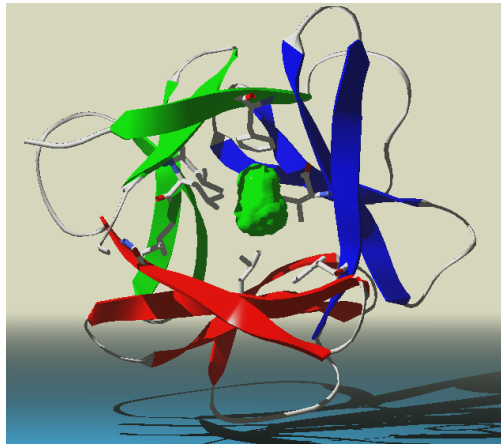


The three-dimensional structure of the human FGF1

FGF1 properties

- studies of FGF1 denaturation demonstrate that this protein is not very stable
- the FGF1 denaturation temperature is approximately 40°C
- in physiological conditions, a significant percentage of the protein molecules have non-native conformations; they are unfolded
- the polypeptide chain is much more sensitive to protease activity in this state
- in consequence it has short *in vivo* half-life

Conclusion: The wild type protein cannot be used industrially due to its insufficient stability



rFGF1 properties

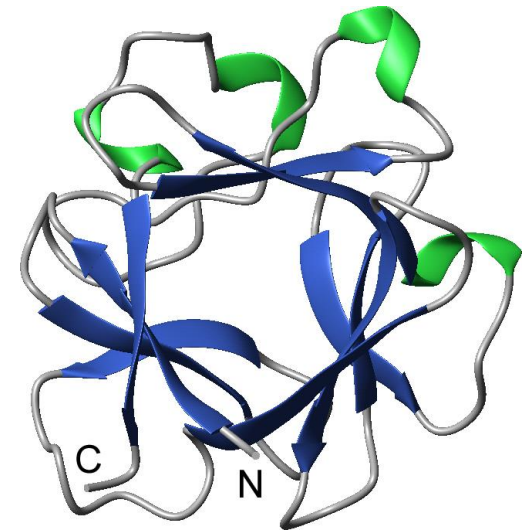
rFGF1

Much higher conformational stability

- increased mitogenic activity
- longer half-life
- much higher resistance to proteolysis
- thermodynamic stability
- less prone to degradation

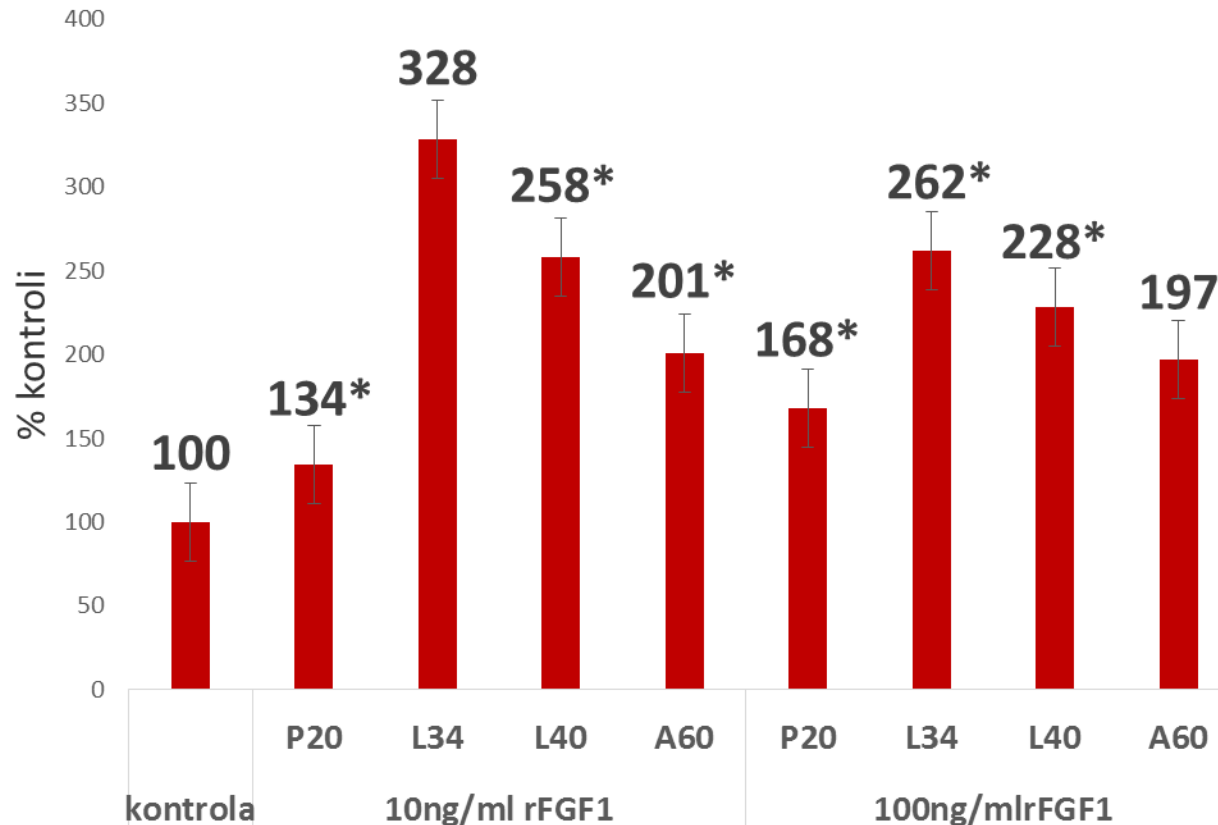
Active prolonged-action protein

- is a potent antioxidant
- inhibits the aging of skin cells
- enhances the skin defense processes
- has strong anti-wrinkle and reconstructive properties



Biological study of rFGF1

The results obtained in experiments showed that the rFGF strongly stimulated proliferation of fibroblasts depending on the age of skin cells donors. We found that rFGF (in both concentrations) most effectively stimulated fibroblasts proliferation from donors aged 34 and 40 years.



LIPO-SPHERE TECHNOLOGY

LIPO-SPHERE technology

A unique transdermal delivery technology

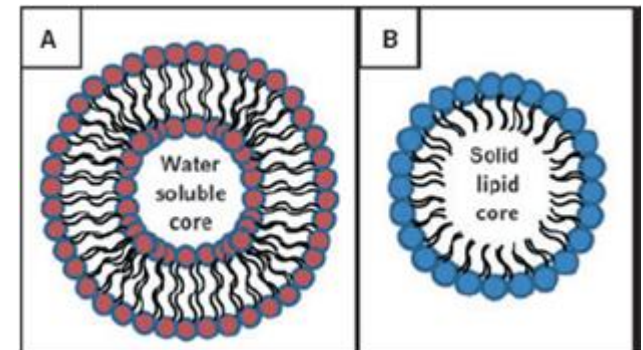
a unique system for delivering **the FGF1 LMS™ formula** into the skin

Invention of Polish scientists

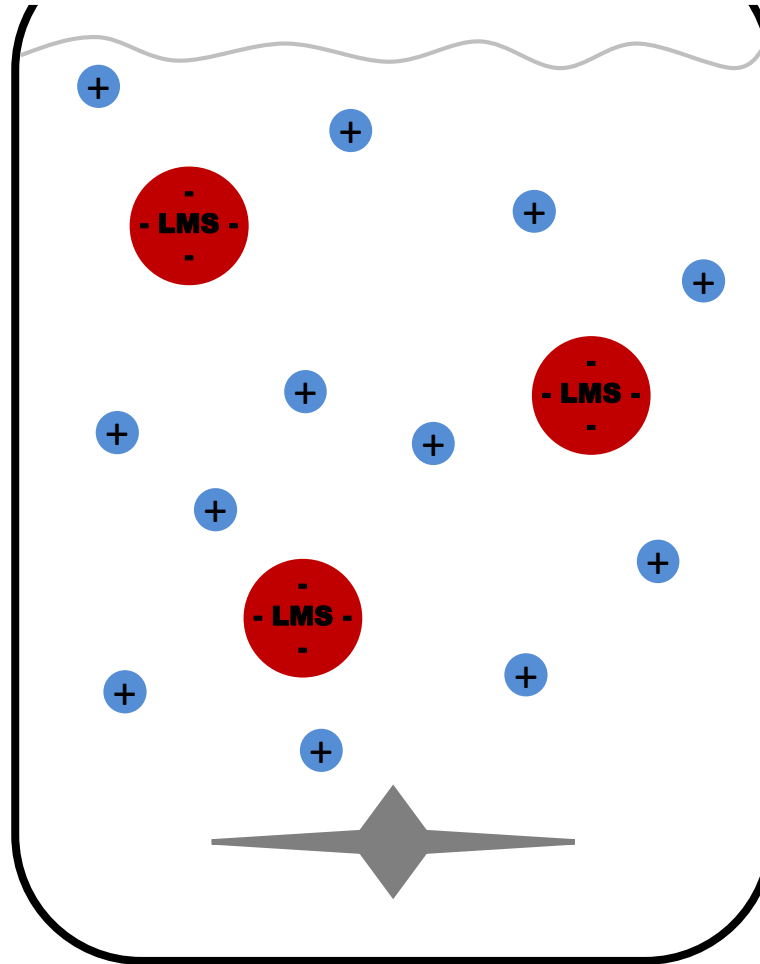
The Lipo-Sphere technology: a unique delivery system based on lipid spheres different from standard liposomes:

- A – **traditional** spherical lipids (bilayer)
- B – **innovative** lipid spheres (monolayer)

**PATENT
PENDING**



RECEIVING FGF 1 LMS™



LIPO-SPHERE TECHNOLOGY

Phase I of the tests confirmed the penetration of rFGF1 from the O/W formulation through the stratum corneum to the depth of 90 μm . Bands at frequencies characteristic for rFGF1 can be observed.

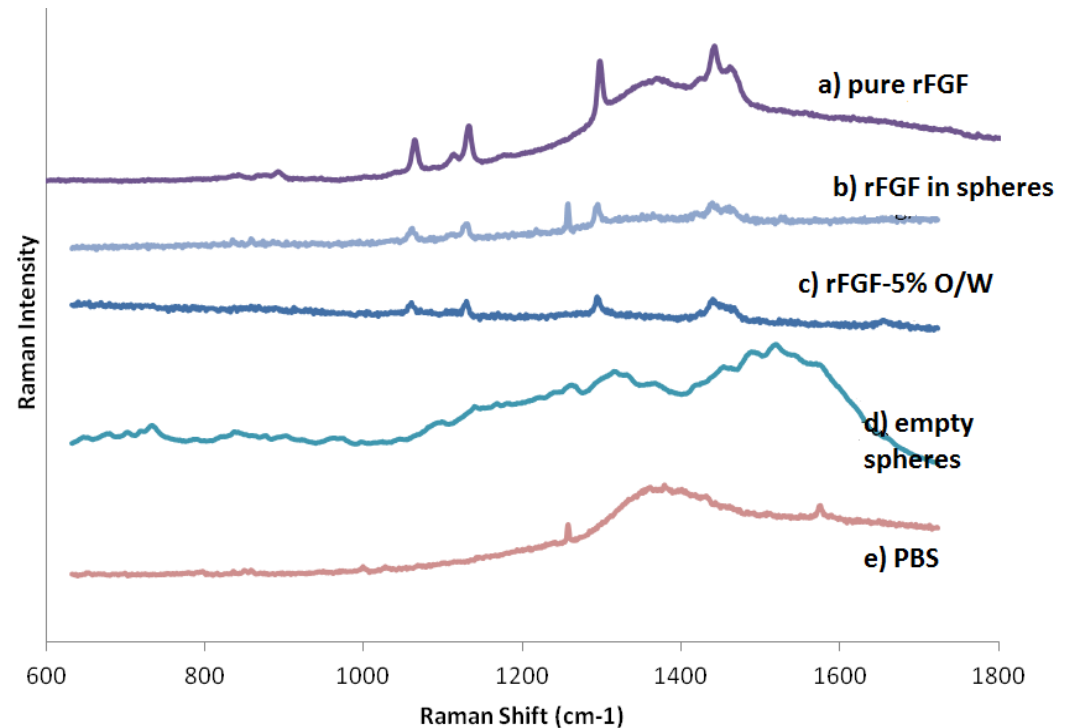


Fig. 1. The spectra of: a) pure rFGF1, b) rFGF1 enclosed in lipid spheres (10 $\mu\text{g}/\text{ml}$) – **presence of bands at frequencies 1063, 1131, 1291, 1440, 2850 i 2883 cm^{-1}** , evidencing the presence of rFGF1. Spectra were generated at the depth of **60 μm** , c) the spectra of a formulation O/W with 5% of rFGF1 in lipid spheres. The measurement was taken at the depth of **90 μm** and bands characteristic for rFGF1 could be observed d) the spectra of empty spheres, e) the spectra of PBS (control).

Biological study of rFGF1

FGF1 LMS increased viability of cells (in vitro tests):

- ✓ dermis – fibroblasts – **even by 300%**
- ✓ epidermis – keratinocytes – **up to 42%**

FGF1 LMS increased fibroblasts elasticity **+34%**

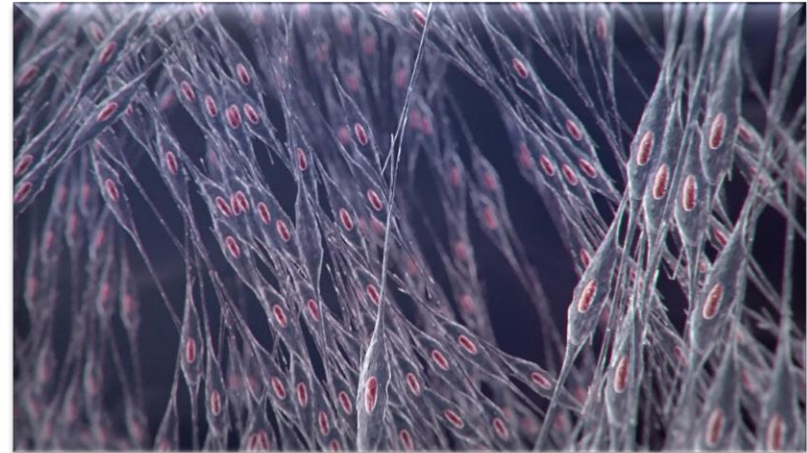
AFM in keratinocytes elasticity testing

Polish Journal of Cosmetology, 2012

Cited worldwide e.x. Journal of Investigative Dermatology.

AFM in keratinocytes elasticity testing

Awarded silver medal at International Exhibition of Inventions

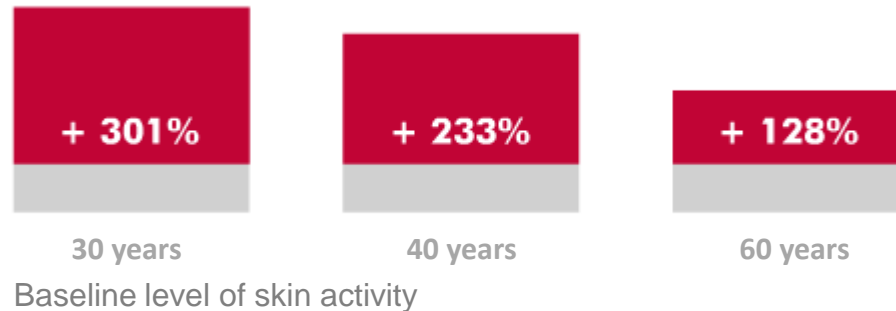


A BREAKTHROUGH IN COSMETOLOGY

SPECTACULAR RESULTS OF *IN VITRO* TESTS:

- An increase in skin fibroblast activity following **FGF LMS formula** application

Enhanced cell activity after **Clinic Way** application



The test results were first presented during the International Congress in Prague and Dermatology Congresses in Venice.

In vivo tests

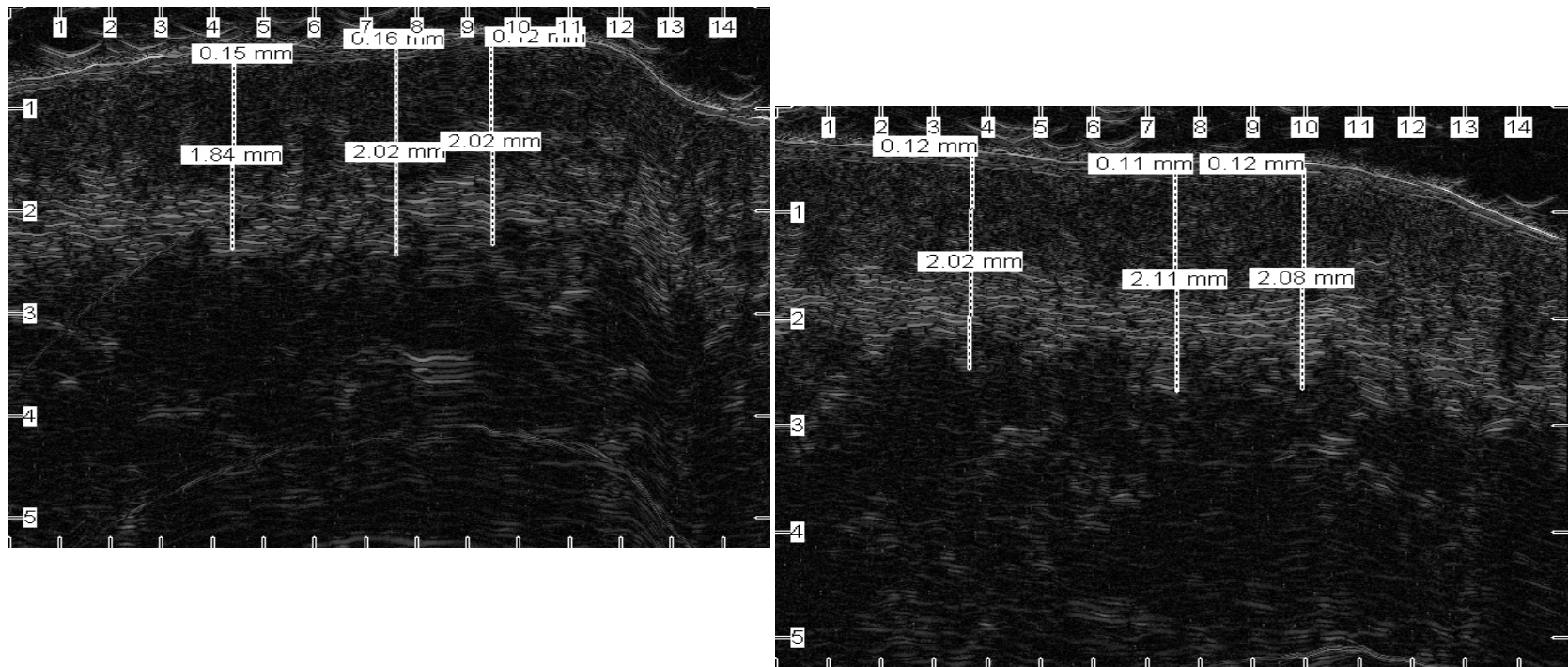
Equipment:

- HF ultrasound device EPISCAN, equipped with the 50 MHz mechanical probe (epidermis echo thickness, dermis thickness, dermis echogenicity and the echogenicity of dermis inferior (reticular) layer)
- PRIMOS (the depth μm and volume of wrinkles mm^3)



Clinically proven efficacy

3° Phytohormonal rejuvenation day cream SPF 15 night cream



A mean increase in dermal thickness by +10%

Table 1. Results obtained from HFU

Location	Parameter	Before treatment (mean value)	After treatment (mean value)	Percent of improvement
Nasolabial fold (n = 20)	Epidermis echo thickness [mm]	0.1050	0.1185	+12.86%
	Dermis thickness [mm]	1.8876	1.8857	No improvement
	Dermis echogenicity [pixels]	40705	40023	No improvement
	Echogenicity of dermis inferior layer [pixels]	15930	16130	+1.25%*
The wrinkle between the eyebrows (n = 20)	Epidermis echo thickness [mm]	0.1273	0.1387	+8.96%
	Dermis thickness [mm]	2.0302	2.2335	+10.01%*
	Dermis echogenicity [pixels]	40368	40009	No improvement
	Echogenicity of dermis inferior layer [pixels]	15741	15801	+0.38%*

n – number of women in the test; *statistically significant values.

Adv Dermatol Allergol 2016; XXXIII (1): 28–36
DOI: 10.5114/pdia.2014.44024

Table 2. Results obtained from Primos

Location	Parameter	Before treatment (mean value)	After treatment (mean value)	The difference between pre- and post-treatment values
Nasolabial fold (n = 20)	The depth of the wrinkle [μm]	Not available	Not available	-75.70
	The volume of the wrinkle [mm^3]	21.20	18.82	-2.38
The wrinkle between the eyebrows (n = 20)	The depth of the wrinkle [μm]	Not available	Not available	-50.99
	The volume of the wrinkle [mm^3]	6.44	5.48	-0.96*

n – number of women in the test, *statistically significant values, “not available” means that the software gives the result as the difference, without before and after values.

Adv Dermatol Allergol 2016; XXXIII (1): 28–36

DOI: 10.5114/pdia.2014.44024

A BREAKTHROUGH IN COSMETOLOGY

SKIN RENEWAL REACTIVATED ON 3 LEVELS

- **Cell reactivation** – extended metabolic and replication capacity of fibroblasts.
- **Tissue reactivation** – a significant increase in the production of skin structural components: collagen, elastin and hyaluronic acid.
- **Reactivated skin function and rejuvenated skin structure** – reduced and smoothed out wrinkles, improved elasticity, restored proper skin hydration level and skin protective function.



THE LINE CONCEPT

CLINIC WAY is the first line of dermocosmetics which rejuvenates the skin and delays the aging process. It is based on a globally unique scientific discovery:

- the groundbreaking **SKIN RENEWAL REACTIVATOR FGF1 LMS™** and the **LIPO-SPHERE transdermal delivery technology**
- **Aqua Calcis**, pharmacopoieal limewater with antiseptic, soothing and irritation-alleviating properties, provides a safe and comfortable care for sensitive skin.

A world INNOVATION in anti-aging care

CLINICALLY PROVEN SAFETY AND EFFICACY

PARABEN-FREE
MILD PRESERVATIVES
HYPOALLERGENIC
CLINICALLY TESTED

confirmed by multicenter clinical trials
supervised by a team of clinical physicians
*and **IN VITRO, EX VIVO, IN VIVO** studies*
at the Dr Irena Eris Centre for Science and Research
and an independent Research Institute

4 degrees of skin care

**An innovative approach
to anti-aging care**

4 TYPES OF WRINKLES

4 SKIN CARE LINES

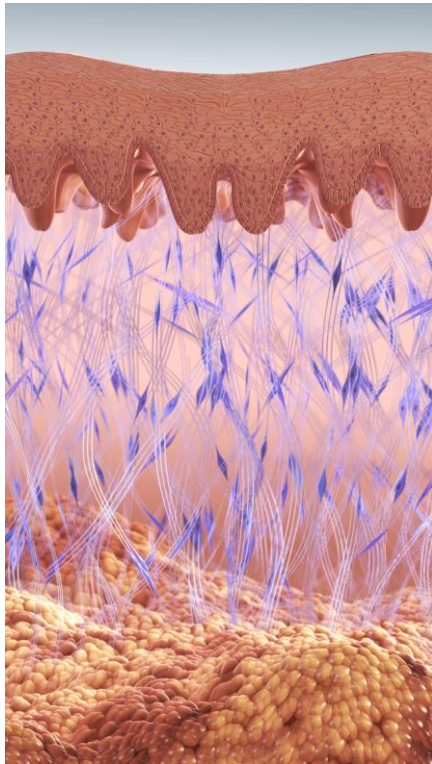
Four stages of skin aging

1° expression lines

2° elastotic wrinkles

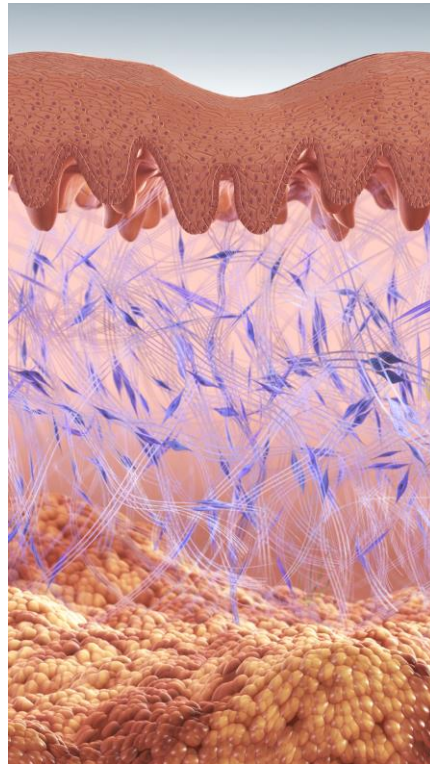
3° atrophic wrinkles

4° gravity wrinkles



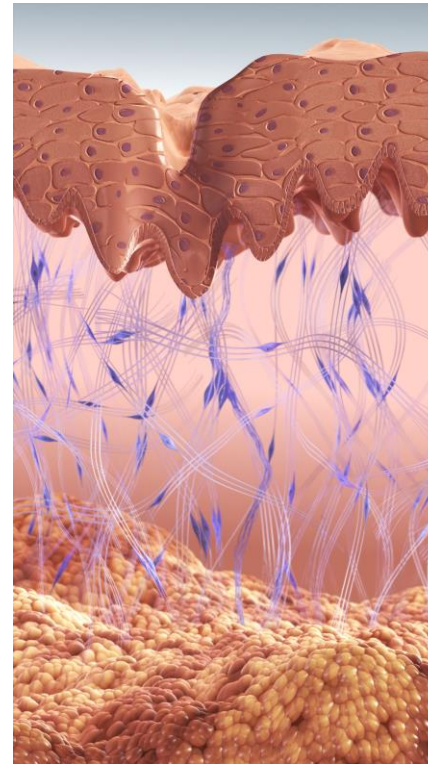
AGE 30+

First minor changes in the supporting skin matrix; deformations related to facial expressions



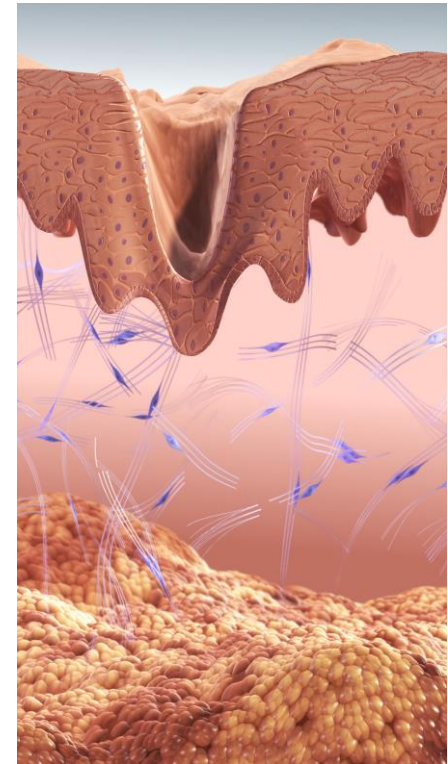
AGE 40+

Abnormal cross-linking and degeneration of skin support fibers (elastosis)



AGE 50+

Decreased amounts of collagen fibers (atrophy)



AGE 60+

Atrophy and deterioration of skin support fibers (collagen and elastin)

An innovative approach to anti-aging care

Taking into account the stage of the skin aging process, four skin care lines have been developed corresponding to 4 types of wrinkles which occur at different ages.

The products form a four-stage anti-wrinkle care program with active ingredients that meet the needs of the skin depending on its age:

- 1° degree of skin care – **HYALURONIC SMOOTHING 30+** ●
- 2° degree of skin care – **RETINOID REVITALIZATION 40+** ●●
- 3° degree of skin care – **PHYTOHORMONAL REJUVENATION 50+** ●●●
- 4° degree of skin care – **PEPTIDE LIFTING 60+** ●●●●

PORTFOLIO of 18 products

Everyday care

Supplementary care

Specialist care

Cleansing

FACE CARE

1°



2°



3°



4°



1° + 2°



3° + 4°



Dermal treatment

1° + 2° + 3° + 4°



1° + 2° + 3° + 4°

EYE CARE

1° + 2°



3° + 4°



CLINIC WAY

CLINIC WAY - CLINICALLY PROVEN SAFETY & EFFICACY

SUMMARY

CLINIC WAY is:

A breakthrough in cosmetology

The result of research conducted
by Polish
and Norwegian scientists

A world innovation
in anti-aging care

A subject of a patent application



CLINIC WAY contains:

FGF1 LMSTM
SKIN RENEWAL REACTIVATOR

The LIPO-SPHERE technology

AQUA CALCIS

ACTIVE INGREDIENTS
that match the type of wrinkles



1º

1° of skin care

1°

HYALURONIC SMOOTHING

UNIQUE SKIN RENEWAL REACTIVATOR

FGF1 LMS™

+ AQUA CALCIS + **HYALURONIC ACID**



Anti-Wrinkle Dermo Cream
1° day care SPF 15

DAY SPF15 DZIEŃ



Anti-Wrinkle Dermo Cream
1° night care

NIGHT NOC

2°

2° of skin care

RETINOID REVITALIZATION 40+

2°

UNIQUE SKIN RENEWAL REACTIVATOR

FGF1 LMS™

+ AQUA CALCIS + **RETINOIDS**



Anti-Wrinkle Dermo Cream
2° day care SPF 20

DAY SPF20 DZIEŃ



Anti-Wrinkle Dermo Cream
2° night care

NIGHT NOC

3°

3° of skin care

3°

PHYTOHORMONAL REJUVENATION 50+

UNIQUE SKIN RENEWAL REACTIVATOR

FGF1 LMS™

+ AQUA CALCIS + PHYTOHORMONES



Anti-Wrinkle Dermo Cream
3° day care SPF 15

DAY SPF15 DZIEŃ

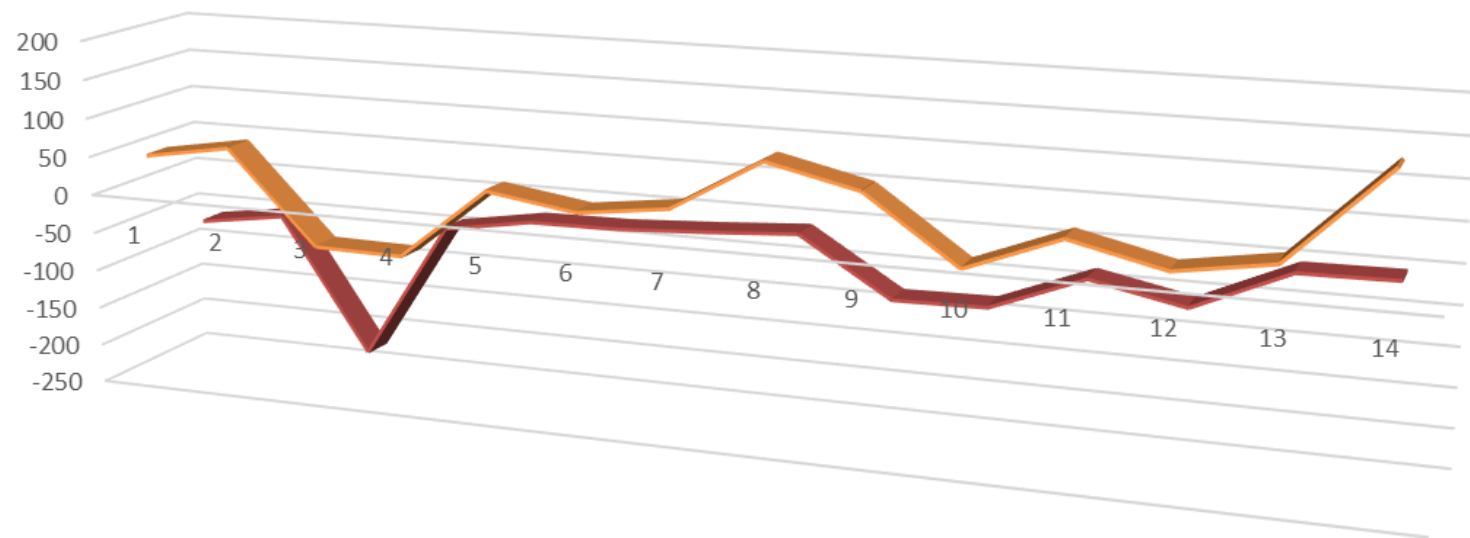


Anti-Wrinkle Dermo Cream
3° night care

NIGHT NOC

3° - Clinically proven efficacy

Difference in the depth of the wrinkle



	1	2	3	4	5	6	7	8	9	10	11	12	13	14
Krem A - Placebo	48,4	67	-51,6	-53,4	39,5	22,3	36,7	103,8	77,2	-4,8	41,2	14	33	150,9
Krem C - Aktywny	-65,6	-49,3	-223,7	-45,9	-27,2	-26	-19,8	-12	-84,7	-82,7	-36,2	-60,2	-7	-5,4

4^o

4° of skin care

4°

PEPTIDE LIFTING 60+

UNIQUE SKIN RENEWAL REACTIVATOR

FGF1 LMS™

+ AQUA CALCIS + **BIO-PEPTIDES**



Anti-Wrinkle Dermo Cream
4° day care SPF 20

DAY SPF20 DZIEŃ



Anti-Wrinkle Dermo Cream
4° night care

NIGHT NOC

$$1^0 + 2^0$$

EYE CARE – 1° and 2° degree

1° and 2° stage of skin aging around the eyes
expression lines and elastotic wrinkles.

1° + 2° degree of anti-wrinkle care
HYALURONIC SMOOTHING 30+

Anti-Wrinkle Dermo Cream 1° and 2° eye care

UNIQUE SKIN RENEWAL
REACTIVATOR

FGF1 LMS™

+ HYALURONIC ACID + PLANT
PROTEINS + AQUA CALCIS



$$3^0 + 4^0$$

EYE CARE – 3° and 4° degree

3° and 4° stage of skin aging around the eyes
atrophic and gravity wrinkles.

3° + 4° degree of anti-wrinkle care
PEPTIDE LIFTING 50+

Anti-Wrinkle Dermo Cream 3° and 4° eye care

UNIQUE SKIN RENEWAL
REACTIVATOR

FGF1 LMS™

TRI-PEPTIDE + PLANT PROTEINS +
AQUA CALCIS



Anti-wrinkle dermo-masks

1° + 2°

Hyaluronic Smoothing



SKIN RENEWAL REACTIVATOR
FGF1 LMS™

+ HYALURONATE + AQUA CALCIS +
GOLDEN ALGAE EXTRACT

3° + 4°

Peptide lifting



SKIN RENEWAL REACTIVATOR
FGF1 LMS™

+ AQUA CALCIS + BIO-LIPOPEPTIDE +
LAMINARIA ALGAE EXTRACT

CLINIC WAY

Dr Irena Eris

Anti-Wrinkle Dermo Serum

1° + 2° Hyaluronic soothing

3° + 4° Peptide lifting

SKIN RENEVAL ACTIVATOR
FGF1 LMS™

+ HIALURONIAN + AQUA CALCIS +
3xC ASCORBYL INTENSE



SKIN RENEVAL ACTIVATOR
FGF1 LMS™

+ AQUA CALCIS +
MULTEPEPTIDE ADVANCED+
PROMATRIX COMPLEX



CLINIC WAY - CLINICALLY PROVEN SAFETY & EFFICACY

Multi-level anti-wrinkle treatment

A+C+E VITAMIN COMPLEX

+

BRASSICA + PYRUS MALUS OIL
CONCENTRATE



Dermotreatment



Intensive Anti-wrinkle Acid-based Dermotreatment

- ❑ Mild peeling activity which allows gradual release of active ingredients into the skin.
- ❑ **Minimalized risk of irritation** while maintaining the efficacy typical of higher AHA concentrations.
- ❑ Effect: **intensive improvement of skin condition**, including sensitive and allergic skin.
- ❑ Recommended use **regardless of age** as a **3-week treatment at night**, for the face, neck and neckline.

CLEANSING



3-PHASE OLEOGEL

- ❑ It has an innovative tri-phase sensory formula. Upon application, it transforms **from gel into oil and then into a cleansing lotion**.
- ❑ Hypoallergenic, it does not contain soap or allergens. Appropriate for every skin type, including **sensitive and allergic skin**.

OIL COMPLEX
+
BIOPEPTIDE
+
GOLDEN ALGAE

MAKE UP REMOVAL



MAKE-UP REMOVAL LOTION

FGF LMS™ UNIQUE SKIN RENEWAL
REACTIVATOR
+
GOLDEN ALGAE

SUMMARY

CLINIC WAY is:

A breakthrough in cosmetology

The result of research conducted
by Polish
and Norwegian scientists

A world innovation
in anti-aging care

A subject of a patent application



CLINIC WAY contains:

FGF1 LMSTM
SKIN RENEWAL REACTIVATOR

The LIPO-SPHERE technology

AQUA CALCIS

ACTIVE INGREDIENTS
that match the type of wrinkles





CLINIC WAY

Thank you for your attention!